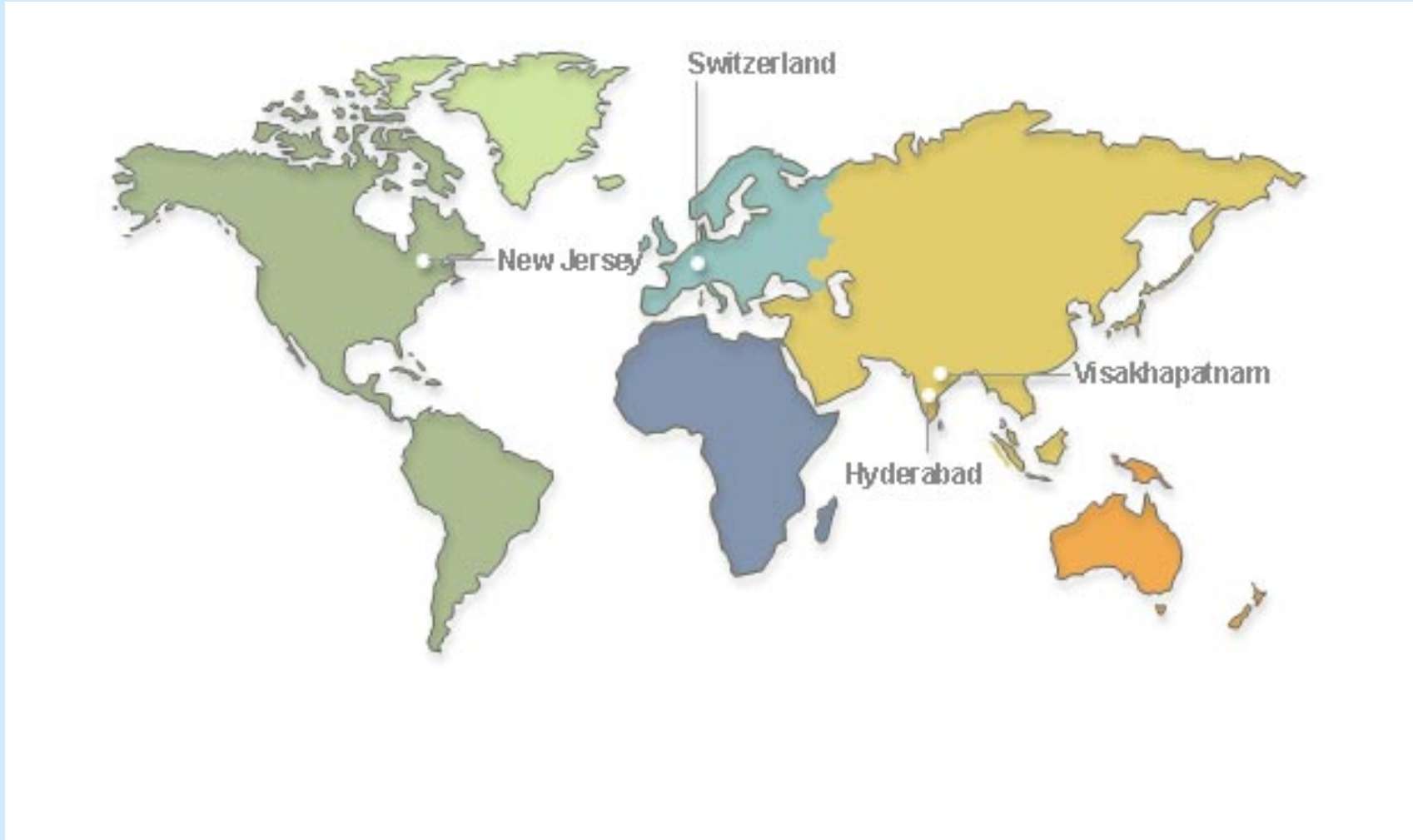




Welcome to Divi's Laboratories Limited



Company Locations





Overview of Facilities

Unit I

- Developed on a 300 acre site
- 13 Production Blocks plus Pilot Plant
- Total capacity 1450 m³
- Operates under full cGMP
- Successful FDA inspected twice



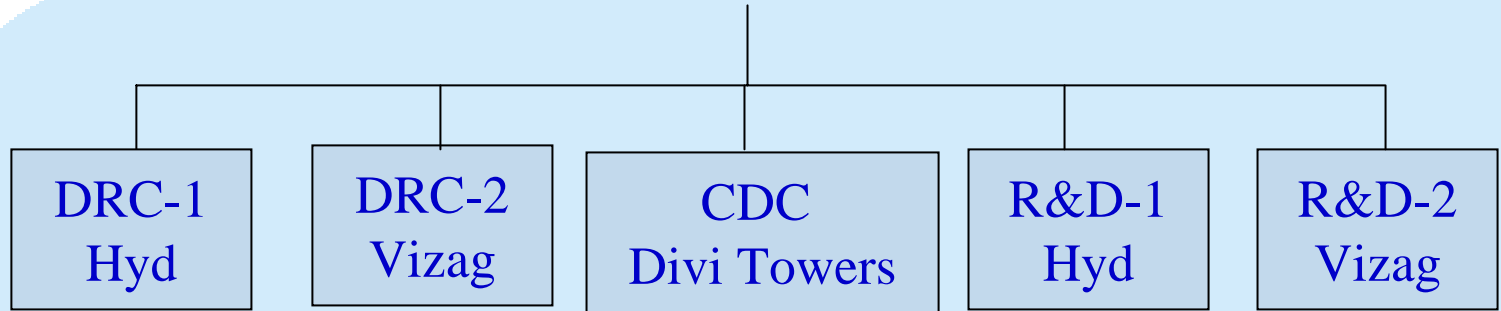
Unit II

- Situated on 314 acre site
- 7 Production Blocks plus Pilot Plant
- Total Capacity of 565 m³
- Operates under full cGMP
- Awaiting FDA inspection





Research Infrastructure



Scientists :	62	46	15	55	22
Research Stations	32	30	-	40	15

No of Scientists	-	200
Groups	-	22
Active projects	-	40
Enquires received	-	700
Projects worked	-	300
Technologies transferred to plant R&D	-	210



Regulatory Status

ISO 9001	-> SGS Yarsley , UK
ISO 14001	-> SGS ICS , Swiss
OHSAS 18001	-> BVQI , London
SAFETY CERT 1998	-> BVQI , London
US FDA	-> Sep 2000, May 2004
DMFs	-> 26
CEPs	-> 8
CUSTOMER VISITS /AUDITS	-> ~ 1070
TOTAL NO. OF CDA	-> 334
CDAs WITH MNCs	-> 50



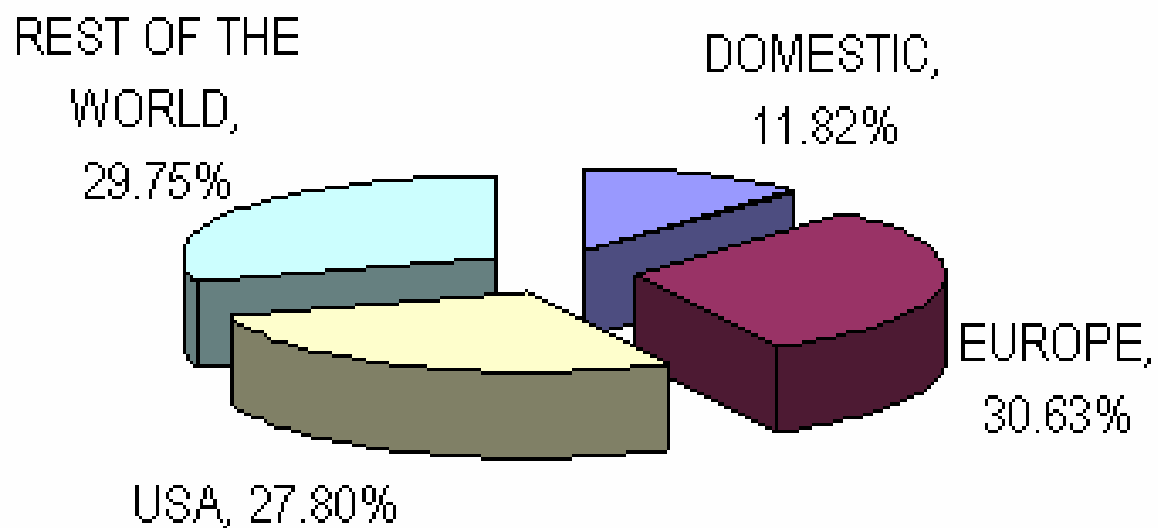
Special Reaction Capabilities

Reactions	Handling capabilities
Cyanation	Sodium metal
High pressure reactions	Sodium hydride
Low temperature reactions	Sodium azide
All types of oxidation & reductions	Sodamide
Reductions with metal hydrides	Raney Nickel/Palladium/Ruthenium
Grignard	N-Butyl lithium
Preparation & use of chiral ligands	Lithium aluminum hydride
Assymetric synthesis	Phosgene
Metallation reactions	DMS
Nitration	Chlorine
Wittig reaction	Bromine
Enzymatic catalysis	Iodine
Photochlorination	Triphosgene



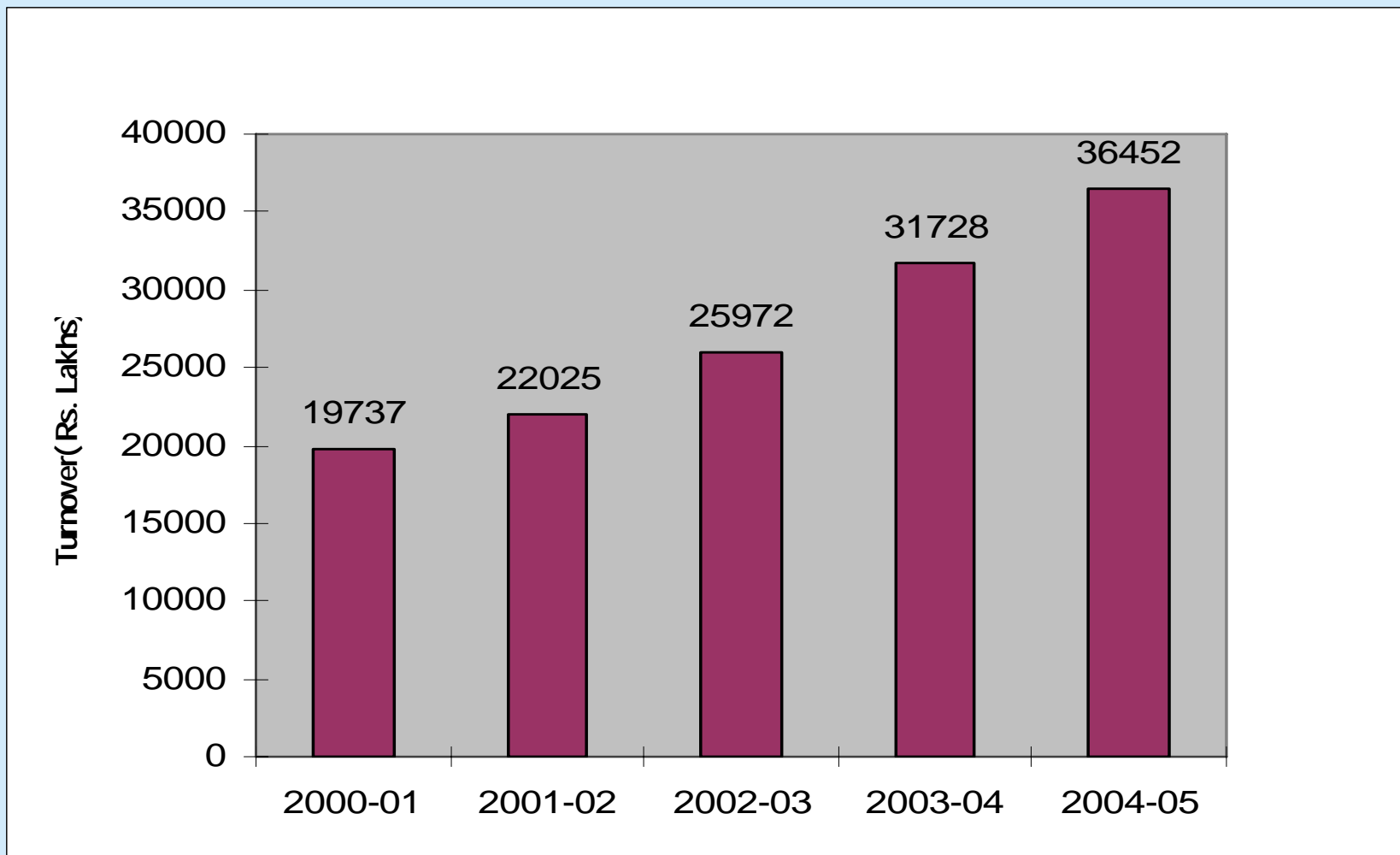
From April 2004 to March 2005

Divis Geographical Sales





Turnover





Effluent Treatment Plant





Awards





THANK YOU